



# SPOTCLEAN USER GUIDE



5207, 9749, & 7786 SERIES

# IMPORTANT SAFETY INSTRUCTIONS

## READ ALL INSTRUCTIONS BEFORE USING YOUR PORTABLE DEEP CLEANER.

When using an electrical appliance, basic precautions should be observed, including the following:

### **⚠ WARNING**

#### **TO REDUCE THE RISK OF FIRE, ELECTRIC SHOCK, OR INJURY:**

- » Connect to a properly grounded outlet only. See grounding instructions. Do not modify the 3-prong grounded plug.
- » Do not leave appliance when it is plugged in. Unplug from outlet when not in use and before servicing.
- » Do not expose to rain. Store indoors.
- » Do not allow to be used as a toy. Close attention is necessary when used by or near children.
- » Do not use for any purpose other than described in this User's Guide. Use only manufacturer's recommended attachments.
- » Do not use with damaged cord or plug. If appliance is not working as it should, has been dropped, damaged, left outdoors, or dropped into water, have it repaired at an authorized service center.

- » Always install float before any wet pick-up operation.
- » Do not pull or carry by cord, use cord as a handle, close a door on cord, or pull cord around sharp edges or corners. Do not run appliance over cord. Keep cord away from heated surfaces.
- » Do not unplug by pulling on cord. To unplug, grasp the plug, not the cord.
- » Do not handle plug or appliance with wet hands.
- » Do not put any object into openings. Do not use with any opening blocked; keep openings free of dust, lint, hair, and anything that may reduce air flow.
- » Keep hair, loose clothing, fingers, and all parts of body away from openings and moving parts.
- » Turn off all controls before plugging or unplugging appliance.
- » Use extra care when cleaning on stairs.
- » Do not use to pick up flammable or combustible materials (lighter fluid, gasoline, kerosine, etc.) or use in areas where they may be present.
- » Do not use appliance in an enclosed space filled with vapors given off by oil base paint, paint thinner, some moth proofing substances, flammable dust, or other explosive or toxic vapors.
- » Do not use to pick up toxic material (chlorine bleach, ammonia, drain cleaner, etc.).
- » Do not pick up anything that is burning or smoking, such as cigarettes, matches, or hot ashes.
- » Use only BISSELL cleaning products intended for use with this appliance to prevent internal component damage. See the Cleaning Fluid section of this guide.
- » Keep appliance on a level surface.
- » Do not carry the appliance while in use.

## SAVE THESE INSTRUCTIONS FOR FUTURE USE

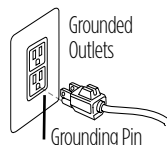
This model is for household use only. Commercial use of this unit voids the manufacturer's warranty.

### **⚠ WARNING**

Improper connection of the equipment-grounding conductor can result in a risk of electrical shock. Check with a qualified electrician or service person if you aren't sure if the outlet is properly grounded. **DO NOT MODIFY THE PLUG.** If it will not fit the outlet, have a proper outlet installed by a qualified electrician. This appliance is designed for use on a nominal 120-volt circuit, and has a grounding attachment plug that looks like the plug in the illustration. Make certain that the appliance is connected to an outlet having the same configuration as the plug. No plug adapter should be used with this appliance.

#### **GROUNDING INSTRUCTIONS**

This appliance must be connected to a grounded wiring system. If it should malfunction or break down, grounding provides a safe path of least resistance for electrical current, reducing the risk of electrical shock. The cord for this appliance has an equipment-grounding conductor and a grounding plug. It must only be plugged into an outlet that is properly installed and grounded in accordance with all local codes and ordinances.



# Quick Start Guide

## Assembly



1. Slide flex hose clip into the opening on the front of the machine until you hear a “snap.”

2. Snap the hose grip bracket into the back of machine on the clean tank side. Wrap flex hose around unit and snap hose grip into bracket.



3. Attach cord wrap by snapping it into place on the dirty water tank side of the machine. Wrap power cord around cord wrap.

## Quick Prep Steps



1. Unwrap hose and select desired tool. Tool easily snaps onto hose.

2. Remove tank from tool side of unit. Pull on the black tab to remove rubber stopper and reveal tank opening.



3. Your tank is marked for a large stain or a small stain. Based on your cleaning need, fill with hot tap water to the water fill line. Add BISSELL 2X formula to the formula fill line.

4. Replace rubber stopper, then replace the tank on the machine.

5. Twist the quick release cord wrap to release the cord, plug in, and you're ready to spot clean!



## Guidelines to Spot Clean

1. Hold the tool 1 inch above soiled surface and spray trigger to apply cleaning formula.
2. Gently scrub the area with brush on tool.
3. Apply downward pressure to the tool and pull it toward you to suction up the dirt and cleaning formula. Continue until no more dirt can be removed.

## Cleaning Formula



» Always use genuine BISSELL portable deep cleaning formulas. Non-BISSELL cleaning solutions may harm the machine and will void the warranty.

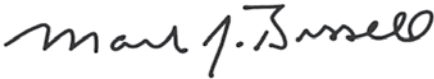
# Thanks for buying a BISSELL portable deep cleaner

We're glad you purchased a BISSELL SpotClean deep cleaner. Everything we know about floor care went into the design and construction of this complete, high-tech home cleaning system.

Your BISSELL SpotClean deep cleaner is well made, and we back it with a limited two year warranty. We also stand behind it with a knowledgeable, dedicated Consumer Care department, so, should you ever have a problem, you'll receive fast, considerate assistance.

My great-grandfather invented the floor sweeper in 1876. Today, BISSELL is a global leader in the design, manufacture, and service of high quality homecare products like your BISSELL SpotClean deep cleaner.

Thanks again, from all of us at BISSELL.



Mark J. Bissell  
Chairman & CEO

Safety Instructions.....	2
Quick Start Guide.....	3
Product View.....	5
Assembly.....	6
Operations.....	6-7
Maintenance & Care.....	8
Troubleshooting.....	9
Accessories.....	10
Warranty.....	11
Consumer Care.....	11
Product Registration.....	12

## TIPS

- » Deep cleaning stairs and high-traffic areas on a regular basis helps prolong carpet life.
- » Check upholstery stuffing before cleaning. Colored stuffing may bleed through the fabric when it becomes wet.
- » Before turning off the machine, suction up clean water to thoroughly rinse out the interior of the flex hose. Then, lift the cleaning tool and point it upwards to drain any remaining water into the dirty water/ collection tank.

# Product View



- 1 Clean Water/Solution Tank
- 2 Power Button
- 3 Dirty Water Tank
- 4 Flex Hose Clip
- 5 Flex Hose
- 6 Power Cord



- 7 Quick Release™ Cord Wrap
- 8 Second Tool Storage Location (select models)
- 9 Tough Stain Brush™ Brush Block Made of 100% Recycled Plastic
- 10 Hose Grip

## Cleaning fluid

Keep plenty of genuine BISSELL Cleaning Solution on hand so you can clean whenever it fits your schedule. Always use genuine BISSELL deep cleaning formulas. Non-BISSELL cleaning solutions may harm the machine and will void the warranty.



BISSELL 2X  
Portable  
Machine  
Spot &  
Stain  
Formula



BISSELL 2X  
Portable  
Machine  
Pet Stain  
& Odor  
Formula

## **⚠️ WARNING**

Use only BISSELL portable machine formula in your cleaner. Use of cleaning formulas which contain lemon or pine oil may damage this appliance and void the warranty. Chemical spot cleaners or solvent-based soil removers also should not be used. These products may react with the plastic materials used in your cleaner, causing cracking or pitting.

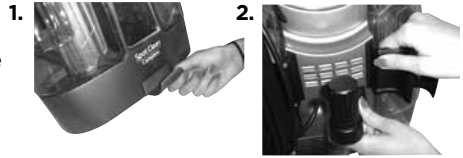
## **⚠️ WARNING**

To reduce the risk of fire and electric shock due to internal component damage, use only BISSELL cleaning fluids intended for use with the deep cleaner.

# Assembly

Assembling your portable machine is a simple process.

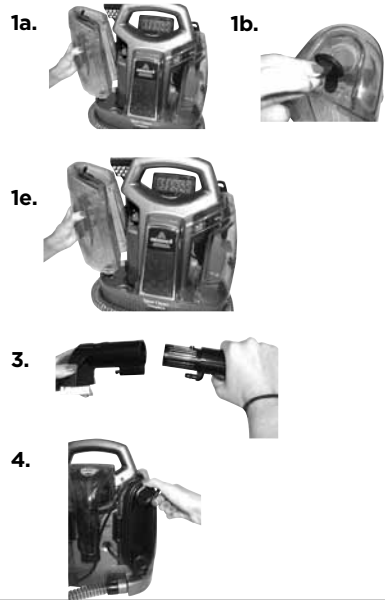
1. Slide the flex hose clip into the opening on the front of the machine. You will hear a “snap” when it is locked into place.
2. Snap the hose grip bracket into the back of the machine on the clean tank side. Wrap the flex hose around the unit and snap hose grip into bracket.
3. Attach the cord wrap by snapping it into place on the collection tank side of the machine. Wrap the power cord around the cord wrap. Snap the second tool storage (select models) into the back of the machine between the cord wrap and hose grip bracket.



# Operations

## Getting ready

1. To fill the clean water/solution tank
  - a. Remove the tank by lifting it straight up and away from the unit.
  - b. Pull on the black tab to reveal tank opening. The plug rotates out of the way for easy filling.
  - c. Your tank is marked for a large stain or a small stain. Based on your cleaning need, fill with hot tap water to the water fill line. Add BISSELL 2X formula to the formula fill line. **DO NOT BOIL OR MICROWAVE WATER.**
  - d. Replace the plug by rotating into place and pressing gently onto tank.
  - e. Replace the tank by lining up tank bottom with indentations on machine. Press down firmly on tank to secure in position.
2. Release the flex hose from the hose grip bracket. Unwrap flex hose completely from around the unit.
3. Select desired tool for spot cleaning. Insert tool on end of hose until it clicks into place.
4. Twist the Quick Release™ cord wrap clockwise to unwrap the power cord completely.



## Pre-treating

Cleaning effectiveness will be enhanced if you pre-treat heavily stained or highly soiled areas. Here's how to do it:

1. Hold the cleaning tool just above the surface of the carpet or upholstery to be cleaned. When using the Deep Reach Tool (select models), keep the tool in contact with the carpet while spraying. Press the trigger to release a spray of cleaning solution directly onto the soiled area.
2. Wait 3-5 minutes before cleaning.

# Operations

## Cleaning with your spot cleaner

1. Plug the unit in and turn on by pressing button under handle.
2. Hold the tool approximately 1" above the soiled surface. When using the Deep Reach Tool (select models), keep the tool in contact with the carpet while spraying. Press the spray trigger to apply the cleaning solution to the soiled area.
3. Using the brush on the tool, gently scrub the area to be cleaned.
4. For thorough cleaning, spray additional solution while the brush and suction are in contact with the surface.
5. Apply downward pressure on the tool and pull it toward you. The suction will remove the dirt and cleaning solution. Continue until no more dirt can be removed.
6. As a final step, use "drying strokes" (by not pressing the spray trigger) to remove as much liquid/moisture as possible. Repeat this step as often as necessary.

## WARNING

Keep spray away from face. Failure to do so may result in personal injury.

## IMPORTANT

Check the manufacturer's tag before cleaning upholstery. "W" or "WS" on the tag means you can use your SpotClean. If tag is coded with an "S" (with diagonal strike-through), or says "Dry Clean Only," do not proceed. If manufacturer's tag is missing or not coded, check with your furniture dealer.

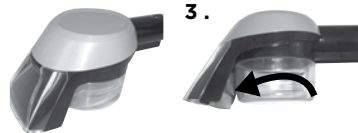
## Cleaning with the Stain Trapper tool (select models)

Your deep cleaner may have come with a Stain Trapper tool. This tool is great for keeping messes out of the machine's hose system.

1. Attach the Stain Trapper tool to the end of the hose.
2. Slowly move the tool back and forth over the stain. Be careful not to move the tool back and forth too quickly or soiled water will flow back into the hose.
3. To empty the Stain Trapper tool, rotate the small tank on the bottom of the tool to unlock it.

**NOTE: Be careful to keep the top of the tool facing upward or soiled water will spill out of the tank, and into the hose.**

4. Dump dirty water into a sink or toilet and rinse the tank out with clean water. Replace the tank by lining up the locking teeth with their mating slots (make sure the two teeth that are closest together are pointed toward the brush). Turn the tank to lock it into place.
5. Clean the front of the tool by removing the plate over the suction path. Pull down on the plate to remove. Run the tool and the plate under clean water to rinse taking care to remove all debris. Replace the front plate by sliding it back into place.



# Maintenance & Care

## After cleaning

1. Unplug power cord from outlet.
2. Empty and rinse the dirty water tank after each use, OR when dirty water reaches the indicated maximum fill line.
  - a. To remove the dirty water collection tank, simply lift up on the tank from the base of the machine.
  - b. Pull tab to remove plug from tank
  - c. Rinse out dirty tank with clean water after emptying.
  - d. Disconnect the cleaning tool from the spray trigger by pushing down on button lock and pulling straight off. (Do NOT twist tool to remove it).
  - e. The front of the Tough Stain Tool can be removed for easy cleaning. Push the button at the top of the tool and slide the front of the tool off the base. Rinse both under water and replace the front of the tool.
  - f. Check spray nozzle for accumulated dirt or debris. If necessary, clean with soft bristle brush.
  - g. The float stack can be removed from the dirty tank for cleaning. Turn it counter-clockwise to remove it. Rinse with water until all debris is removed. Replace the float stack in the dirty tank and turn clockwise to lock.

## WARNING

To reduce the risk of electric shock, turn power switch off and disconnect plug from electrical outlet before performing maintenance or troubleshooting checks.

## Machine storage

1. Wipe all surfaces with a soft cloth.
2. Wrap power cord around the cord wrap on the back of the machine.
3. Wrap flex hose around the base of the unit and secure the spray trigger.
4. Store unit in protected, dry area, at room temperature (40° to 110°F).

## Thermal protector

An internal thermal protector has been designed into your cleaner to protect it from overheating. When the thermal protector activates, the suction motor will stop operating. If this happens, proceed as follows:

1. Turn the cleaner OFF (O) and unplug from electrical outlet.
2. Check the end of the hose and tool for blockages and remove if necessary.
3. Check the float stack for clogs. Refer to cleaning instructions above.
4. When the motor cools for approximately 30 minutes, the thermal protector automatically resets and cleaning may continue. If the thermal protector continues to activate after following the above steps, your cleaner may need servicing. Call BISSELL Consumer Care or visit the website.



# Troubleshooting

## **WARNING**

To reduce the risk of electric shock, turn power switch off and disconnect plug from electrical outlet before performing maintenance or troubleshooting checks.

<b>Problem</b>	<b>Possible causes</b>	<b>Remedies</b>
<b>Reduced spray or no spray</b>	Spray nozzle clogged	Clean spray nozzle using an unfolded paper clip
	Clean water/solution tank empty	Check/fill tank
	Clean water/solution tank insert clogged	Clean insert at bottom of clean water/solution tank
	Pump needs priming	Gently lift clean water/solution tank while depressing the spray trigger OR gently squeeze clean tank while depressing spray trigger
<b>Spot cleaner won't pick up cleaning solution</b>	Poor upholstery/carpet tool position	Reposition upholstery/carpet tool on surface, follow recommended cleaning procedures
	Dirty water tank is full	Empty dirty water tank
	Upholstery/carpet tool brush worn	Replace with new brush
	Excess solution in flex hose	Lift tool and point upwards to allow water in hose to flow into the dirty water tank
	Incorrect cleaning formula	Use BISSELL 2X Portable Machine formulas only

**Please do not return this product to the store.**

Other maintenance or service not included in the manual should be performed by an authorized service representative.

Thank you for selecting a BISSELL product.

**For any questions or concerns, BISSELL is happy to be of service. Contact us directly at 1-800-237-7691.**

# Accessories

These items are available for your BISSELL SpotClean portable deep cleaner.  
Call 1-800-237-7691 or visit [www.BISSELL.com](http://www.BISSELL.com)

<b>PART #</b>	<b>PART NAME</b>		<b>PART #</b>	<b>PART NAME</b>	
160-0055	Tough Stain Brush Tool		160-0057	Stain Trapper Tool	
203-7412	Deep Reach Pet Tool		203-7885	Spraying Crevice Tool	
203-6654	6" Stair Tool		203-6653	4" Upholstery Tool	
<b>CLEANING FORMULAS</b>					
79B9	2X Portable Machine Spot & Stain Formula 32oz		74R7	2X Portable Machine Pet Stain & Odor 32oz	

# Warranty

This warranty gives you specific legal rights, and you may also have other rights which may vary from state to state. If you need additional instruction regarding this warranty or have questions regarding what it may cover, please contact BISSELL Consumer Care by E-mail, telephone, or regular mail as described below.

## Limited Two-Year Warranty

Subject to the \*EXCEPTIONS AND EXCLUSIONS identified below, upon receipt of the product BISSELL will repair or replace (with new or remanufactured components or products), at BISSELL's option, free of charge from the date of purchase by the original purchaser, for two years any defective or malfunctioning part.

See information below on "If your BISSELL product should require service".

This warranty applies to product used for personal, and not commercial or rental service. This warranty does not apply to fans or routine maintenance components such as filters, belts, or brushes. Damage or malfunction caused by negligence, abuse, neglect, unauthorized repair, or any other use not in accordance with the User's Guide is not covered.

BISSELL IS NOT LIABLE FOR INCIDENTAL OR CONSEQUENTIAL DAMAGES OF ANY NATURE ASSOCIATED WITH THE USE OF THIS PRODUCT. BISSELL'S LIABILITY WILL NOT EXCEED THE PURCHASE PRICE OF THE PRODUCT.

**Some states do not allow the exclusion or limitation of incidental or consequential damages, so the above limitation or exclusion may not apply to you.**

## \*EXCEPTIONS AND EXCLUSIONS FROM THE TERMS OF THE LIMITED WARRANTY

THIS WARRANTY IS EXCLUSIVE AND IN LIEU OF ANY OTHER WARRANTIES EITHER ORAL OR WRITTEN. ANY IMPLIED WARRANTIES WHICH MAY ARISE BY OPERATION OF LAW, INCLUDING THE IMPLIED WARRANTIES OF MERCHANTABILITY AND FITNESS FOR A PARTICULAR PURPOSE, ARE LIMITED TO THE two YEAR DURATION FROM THE DATE OF PURCHASE AS DESCRIBED ABOVE.

Some states do not allow limitations on how long an implied warranty last so the above limitation may not apply to you.

**NOTE: Please keep your original sales receipt. It provides proof of date of purchase in the event of a warranty claim.**

# Service

## If your BISSELL product should require service:

Contact BISSELL Consumer Care to locate a BISSELL Authorized Service Center in your area.

If you need information about repairs or replacement parts, or if you have questions about your warranty, contact BISSELL Consumer Care.

## Website or E-mail:

[www.BISSELL.com](http://www.BISSELL.com)

## Or Call:

BISSELL Consumer Care  
1-800-237-7691

Monday - Friday 8am - 10pm ET

Saturday 9am - 8pm ET

Sunday 10am - 7pm ET

## Or Write:

BISSELL Homecare, Inc.  
PO Box 3606  
Grand Rapids, MI 49501  
ATTN: Consumer Care

# Register your product today!

Registering is quick, easy and offers you benefits over the lifetime of your product.

## You'll receive:

### **BISSELL Rewards Points**

Automatically earn points for discounts and free shipping on future purchases.

### **Faster Service**

Supplying your information now saves you time should you need to contact us with questions regarding your product.

### **Product Support Reminders and Alerts**

We'll contact you with any important product maintenance reminders and alerts.

### **Special Promotions**

Optional: Register your email to receive notice of offers, contests, cleaning tips and more!

**Visit [www.BISSELL.com/registration](http://www.BISSELL.com/registration) now!**

## BISSELL Consumer Care

For information about repairs or replacement parts, or questions about your warranty:

### **Call:**

**BISSELL Consumer Care**  
1-800-237-7691

Monday - Friday      8 am - 10 pm ET  
Saturday              9 am - 8 pm ET  
Sunday                 10am - 7pm ET

### **Write:**

**BISSELL Homecare, Inc.**  
PO Box 3606  
Grand Rapids MI 49501  
ATTN: Consumer Care

**Visit the BISSELL website: [www.BISSELL.com](http://www.BISSELL.com)**

When contacting BISSELL, have model number of cleaner available.

Please record your Model Number: \_\_\_\_\_

Please record your Purchase Date: \_\_\_\_\_

**NOTE: Please keep your original sales receipt. It provides proof of purchase date in the event of a warranty claim. See Warranty on page 15 for details.**

*We can't wait to hear from you!*

Rate this product and let us (and millions of your closest friends) know what you think!

**[www.BISSELL.com](http://www.BISSELL.com)**



©2012 BISSELL Homecare, Inc.  
Grand Rapids, Michigan  
All rights reserved. Printed in Korea  
Part Number 160-0131 Rev 11/12  
Visit our website at: [www.BISSELL.com](http://www.BISSELL.com)